

# COMPACT ECONOMICAL THERMAL SOLUTIONS



## CX Series Printers

The desktop CX thermal printers are ideal for a range of low-volume applications, including:

-  **Manufacturing**
-  **Shipping/Receiving**
-  **Asset Tracking**
-  **Compliance Labeling**
-  **Retail**
-  **Healthcare**

### Economical Solution

The CX Series offers a low-cost printing solution for low-volume applications. Speed of 4 inches-per-second and feature-rich design will satisfy a wide spectrum of requirements.

### Compact Design

Designed for convenience, the CX Series offers compact design for real-estate-sensitive applications. It offers many advanced features, simplifying loading and operation.

### Media Capacity

The CX Series is designed to accommodate a full 5" OD roll of media, reducing downtime and simplifying operation.

Performs best with  
**Techno**  
T H E R M  
Labels & Ribbons



THE BEST PERFORMING  
COMPACT

# SPECIFICATIONS

## CX400/410



### Out of the box ... and ready to go!

Complete with:

- Labeling Software
- Parallel Printer Cable
- Starter Roll of Media & Ribbon
- Power Supply
- User's & Programmer's Guide



**Printing Method**  
**Print Resolution**  
**Print Speed**  
**Media Width**  
**Max. Print Width**  
**Min. Print Length**  
**Max. Print Length**  
**Max. Ribbon Size**  
**Dimensions**  
**Weight**

| CX400   | CX410                |
|---|----------------------|
| Thermal Transfer/Direct Thermal   |                      |
| 203 dpi (8 dpmm)  | 305 dpi (12 dpmm)    |
| 4 ips (100 mm/second)   | 3 ips (75 mm/second) |
| Max. 4.69" (119 mm) /Min 0.87" (22 mm)  |                      |
| 4.1" (104 mm)   | 4.25" (106 mm)       |
| 0.87" (22 mm)   |                      |
| 50" (1270 mm)   | 25" (635 mm)         |
| 4.4" (110 mm) W x 426 ft. (130 m) L w/Standard Wax Ribbon;<br>CSO (coated side out) |                      |
| 7.76" W x 10.2" D x 6.5" H<br>(197 mm W x 257 mm D x 164 mm H)                      |                      |
| 8.09 lbs (3.67 kg)  |                      |

#### Memory:

2 MB DRAM  
2 MB Flash ROM  
4 MB or 6 MB Optional Flash

#### Processor:

32-BIT

#### Media:

Roll-fed or fan-fold, die-cut or continuous direct thermal or thermal transfer labels, synthetics, and tag stock with or without black mark, gap, or notch.

Max. Caliper: 0.01" (0.254 mm)  
Max. Roll Diameter: 5" (127 mm)  
Core Diameter: 1.5" (38 mm)  
Wind: Face-In

#### Ribbon:

Max. Roll Diameter: 1.41" (36 mm)  
Min. Core Diameter: 0.75" (19 mm)  
Wind: CSO (coated side out)

#### Sensing:

Adjustable transmissive sensor for gap.  
Reflective sensor for black mark. Automatic, programmable setting of top of form. Label present sensor - optional with label dispenser.  
Ribbon-out sensor

#### Interface:

- Serial RS232 (up to 38.4k bps)
- Centronics Parallel

#### Barcode Symbolologies:

**Elementary:** UPC-A, UPC-E, EAN-8, EAN-13, Code 39, Code 93, Code 128, Codabar, MSI, Bookland, Industrial 2/5, Interleaved 2/5, Matrix 2/5, Postnet, UCC/EAN 128  
**2-Dimensional:** PDF417, Maxicode

#### Fonts:

Bitmap - 12 proportional, mono-spaced and outline fonts (Code table 858).

#### Barcode & Font Formatting:

360° rotation of barcodes and text, character expansion horizontally and vertically, sequential numbering, form overlay for high-speed editing of complex formats.

#### Graphic Support:

Printing & storage of .PCX, .BMP format, SATO Hex/binary

#### Software:

Windows® Drivers (Windows® 95, 98, ME, NT4.0, 2000, XP)  
"Label Gallery Free" - Label Software  
Printer Utilities

#### Electrical Requirements:

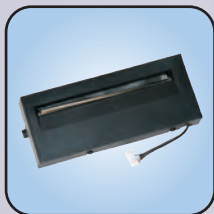
100-120VAC/200-240VAC, 50/60 Hz ( $\pm 1\%$ )  
Agency Certifications: CE, UL, CSA, TÜV

#### Environmental Requirements:

Operating: 40° to 100°F (4° to 38°C)  
30-80% RH, non-condensing  
Storage: -4° to 122°F (-20° to 50°C)  
Max. 85% RH, non-condensing  
ESD: 8kV

#### Optional Features:

Label Cutter (factory installed), Label Dispenser (factory installed), 220 V Power Supply, External USB, External Ethernet, Memory Expansion, Keyboard



Cutter



Label Gallery



Keyboard

**SATO**  
DCS & Labeling Worldwide

#### SATO America, Inc.

10350-A Nations Ford Road, Charlotte, NC 28273  
Phone: (704) 644-1650 Fax: (704) 644-1659  
E-mail: satosales@satoamerica.com

[www.satoamerica.com](http://www.satoamerica.com)